

# How to view the live broadcast on Wialon?

First, go to [device configuration cabinet](#)

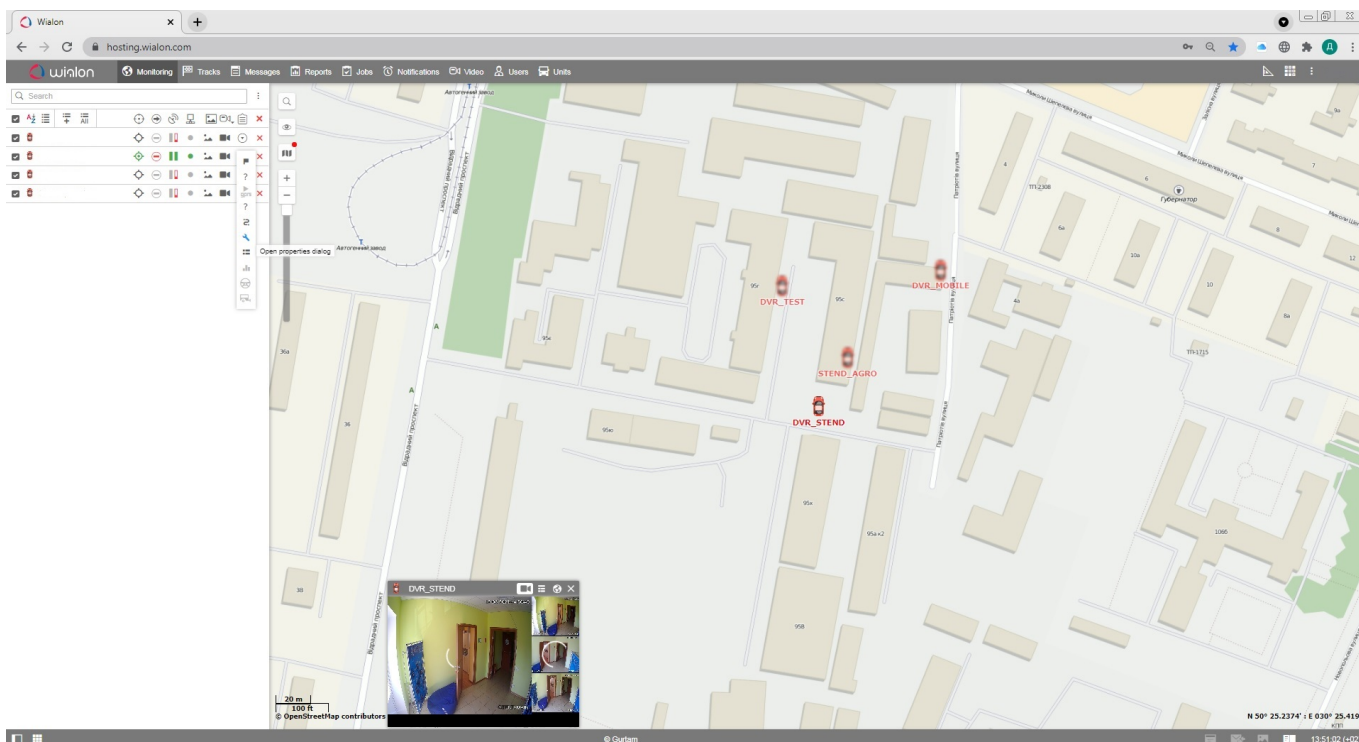
In the token of quick access section, press the IP camera button and copy **dash** link to the desired camera by clicking on it:

The screenshot shows a web interface for configuring IP cameras. It features four panels for 'IP camera 1' through 'IP camera 4'. Each panel has 'Live video' options (hls, dash, Live HLS) and 'Camera settings' (WEB, RTSP, Go to WEB) with radio buttons for 'Access WEB' and 'Access RTSP'. Below these are three diagrams illustrating streaming methods: 1) 'BROADCAST MULTIPLE STREAMS AT A TIME' showing an mNVR connected to the internet and then to a client with multiple cameras. 2) 'BROADCAST ONE STREAM AT A TIME' showing an mNVR connected to the internet and then to a client with multiple cameras, but only one stream is active. 3) 'Multi-user live video player' showing an mNVR connected to the internet and then to a 'RESTREAM SERVER' which then feeds into multiple clients. Each diagram includes a 'Go' button.

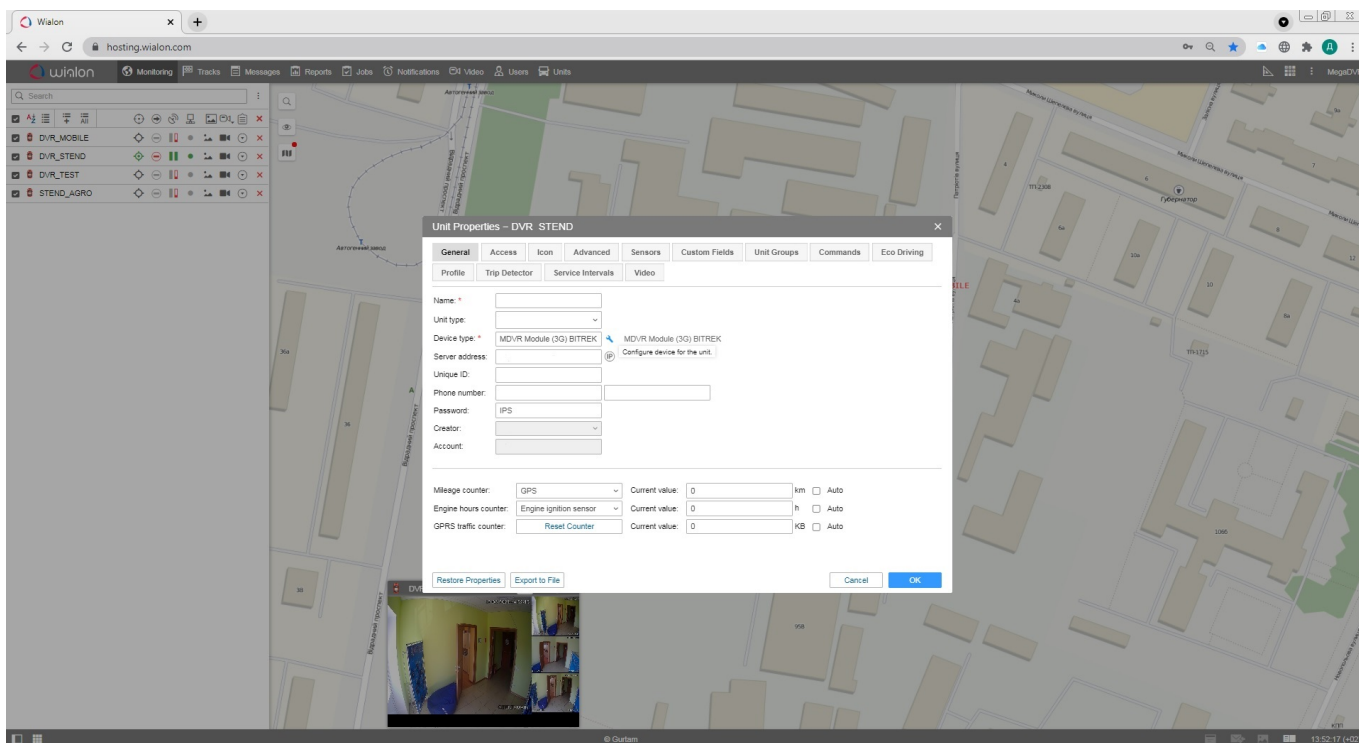
Then go to [wialon.com](http://wialon.com) enter your login and password and press **LOG IN**.

The screenshot shows the Wialon login page in a browser. The page has a header with the Wialon logo and a login form with fields for 'User', 'Password', and 'Language' (set to English). There are checkboxes for 'Remember' and 'Log in as | Log in with Google | Forgot your password?'. Below the form are buttons for 'Log in', 'Download on the App Store', 'GET IT ON Google Play', and 'EXPLORE IT ON AppGallery'.

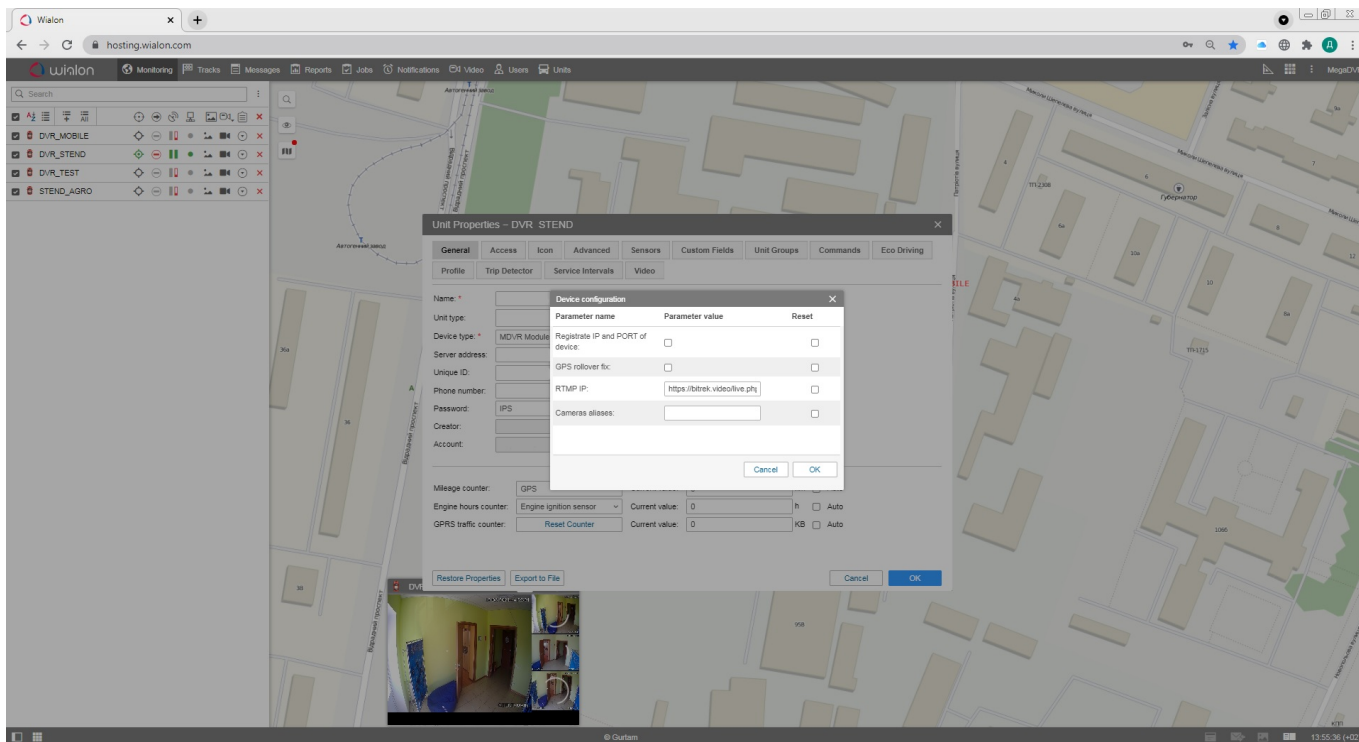
From here you will see the main menu of Wialon Service, on the left you will see the list of available devices. To receive live broadcasts from them you need to press the button of the flip-down list (**open additional options**) and press the icon of key (**open properties dialog**).



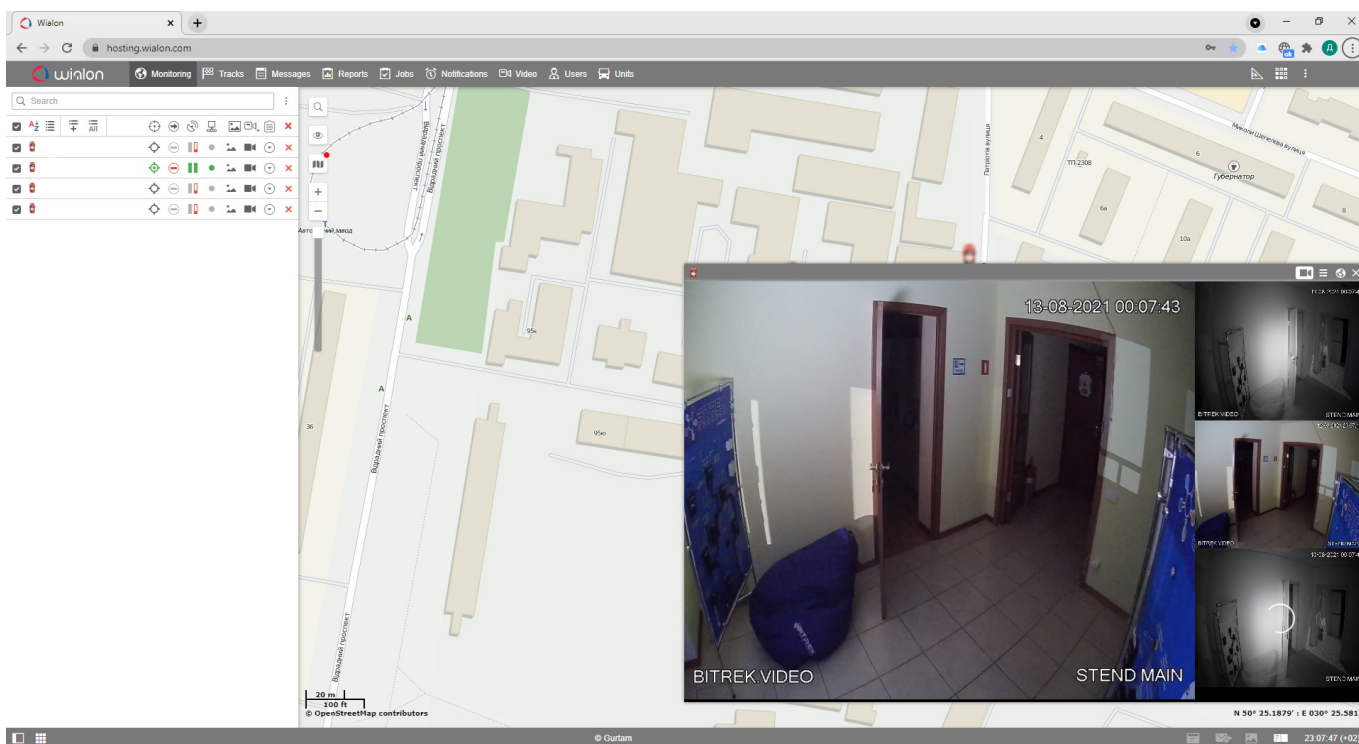
A window will open where you should enter the name of the unit (by default - **MDVR Module (3G) BITREK**) and press the key icon (**configure device for the unit**).



In this window in the RTMP IP field you have to insert the link copied from [bitrek.video](https://docs.bitrek.video) and press OK.



Then you can close the dialog boxes and click the camera icon near the desired device (**live view**).



Done! You have successfully set up the live broadcast on Wialon.

From:  
<https://docs.bitrek.video/> - Bitrek Video Wiki  
Permanent link:  
<https://docs.bitrek.video/doku.php?id=en:livewialon>  
Last update: 2024/04/18 13:51

